

# Human CD20/MS4A1 Protein

Cat. No. CD2-HE120



## Description

<b>Source</b>	Recombinant Human CD20/MS4A1 Protein is expressed from E.coli with His tag and Avi tag at the C-Terminus. It contains Ile141-Ser188.
<b>Accession</b>	P11836-1
<b>Molecular Weight</b>	The protein has a predicted MW of 16.8 kDa same as Bis-Tris PAGE result.
<b>Endotoxin</b>	Less than 1EU per µg by the LAL method.
<b>Purity</b>	> 95% as determined by Bis-Tris PAGE

## Formulation and Storage

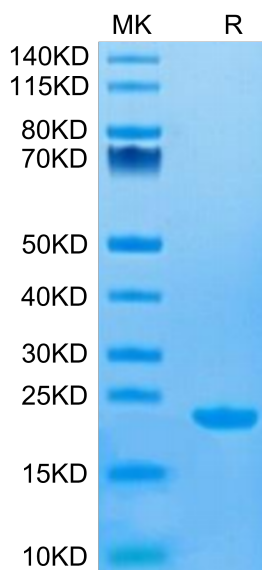
<b>Formulation</b>	Supplied as 0.22µm filtered solution in 20mM PB, 10% Glycerol, 0.4M Urea, 1mM GSH, 0.1mM GSSG (pH 7.0).
<b>Storage</b>	Valid for 12 months from date of receipt when stored at -80°C. Recommend to aliquot the protein into smaller quantities for optimal storage. Please minimize freeze-thaw cycles.

## Background

B-lymphocyte antigen CD20 or CD20 is an activated-glycosylated phosphoprotein expressed on the surface of all B-cells beginning at the pro-B phase (CD45R , CD117) and progressively increasing in concentration until maturity. CD20 is the target of the monoclonal antibodies rituximab, ocrelizumab, obinutuzumab, ofatumumab, ibritumomab tiuxetan, tositumomab, and ublituximab, which are all active agents in the treatment of all B cell lymphomas, leukemias, and B cell-mediated autoimmune diseases.

## Assay Data

### Bis-Tris PAGE



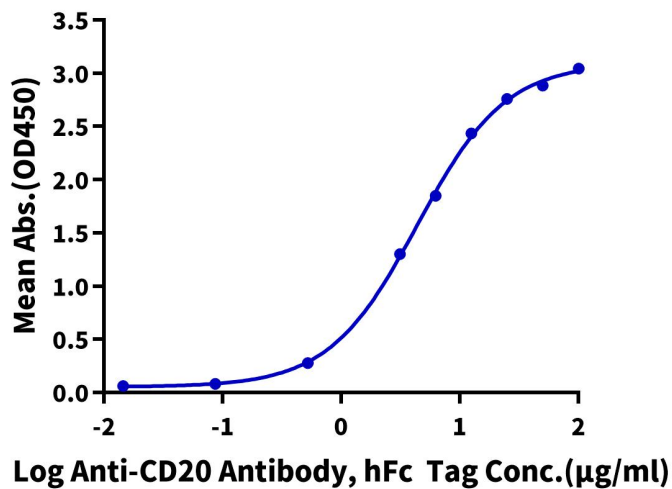
Human CD20 on Bis-Tris PAGE under reduced condition. The purity is greater than 95%.

### ELISA Data

Assay Data

**Human CD20, His Tag ELISA**

0.5µg Human CD20, His Tag Per Well



Immobilized Human CD20, His Tag at 5µg/ml (100µl/well) on the plate. Dose response curve for Anti-CD20 Antibody, hFc Tag with the EC50 of 4.4µg/ml determined by ELISA.